

Uno

LED circular high bay with reflector

Ultra high efficiency 

CHIP **OSRAM** **LUMILEDS**
DRIVER **PHILIPS** **MW MEAN WELL**

- High Efficiency of 145lm/W
- Diecast aluminium body
 - IP65
 - Vandal resistant (IK08)
- 1.5m of H05RN-F 3 x 1mm² cable provided
- Optional reflectors for all models

- 3** Years Standard Warranty
- 5** Years Extended Warranty
- 4000V** Surge Protection (L to GND)
- 100-240V** Input voltage



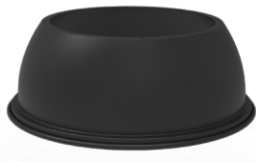
Optional Connector
KCWP3IN



PC Shade
KPT-KHBEC1-S6



PC Shade
KPT-KHBEC1-S2



Aluminium Shade
KPT-KHBEC1-S3



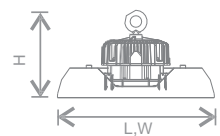
PC Lid
KPT-KHBNC1-D1

General Specification

Voltage	100-240Vac 50-60Hz
CRI	>70
Life Time	50,000h
Power Factor	>0.96
Ambient Temp	-20°C to 50°C
Housing	Diecast aluminium



Dimensions



Order Code	Power	Beam Angle	CCT	Lumen	Dimensions L W H
EHBU100C2	100W	120°	5000K	14500lm	270*270*190mm
EHBU150C2	150W	120°	5000K	21750lm	270*270*190mm
EHBU200C2	200W	120°	5000K	29000lm	300*300*190mm

Accessories

Type	Order Code	Description	Trade Price
PC Shade	EPT-KHBEC1-S6	Translucent shade Ø414x98mm for EHBE100C2	
PC Shade	EPT-KHBEC1-S2	Translucent shade Ø411x158mm for EHBE150C2,EHBE200C2	
Aluminium Shade	EPT-KHBEC1-S3	Opaque shade Ø404x138mm for EHBE150C2,EHBE200C2	
PC Lid	EPT-KHBNC1-D1	Translucent bottom enclosure Ø404x40mm for EPT-KHBEC1-S2	
Connector	ECWP3IN	IP67 In-line Connector	